



# INDOFINE Chemical Company, Inc.

121 Stryker Lane, Bldg. 30, Suite 1 • Hillsborough, NJ 08844 • U.S.A.

Phone: (908) 359-6778 • FAX: (908) 359-1179

website: [www.indofinechemical.com](http://www.indofinechemical.com)

e-mail: [chemical@indofinechemical.com](mailto:chemical@indofinechemical.com)

## CERTIFICATE OF ANALYSIS

Catalog Number: 020107S

Product Name: GINSENOSE Rf

Cas Number: [52286-58-5]

Lot Number: 1509674

Chemical Formula: C<sub>42</sub>H<sub>72</sub>O<sub>14</sub>

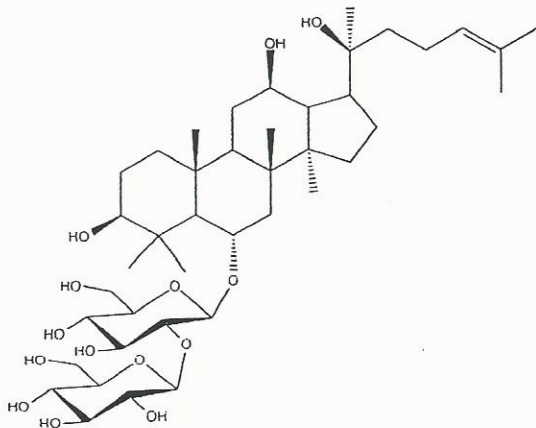
Molecular Weight: 801.03

Appearance: White powder

Loss on drying: 1.0%

Storage: This product is stable at ambient temperature for several weeks. However, optimum long-term storage may require lower temperature (<-18°C). Place in a desiccator under vacuum before use. Protect from light.

Purity(HPLC): 99.87%





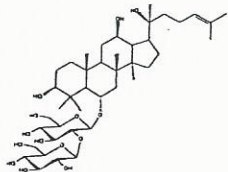
# INDOFINE Chemical Company, Inc.

121 Stryker Lane, Bldg. 30, Suite 1 • Hillsborough, NJ 08844 • U.S.A.

Phone: (908) 359-6778 • FAX: (908) 359-1179

website: [www.indofinechemical.com](http://www.indofinechemical.com)

e-mail: [chemical@indofinechemical.com](mailto:chemical@indofinechemical.com)



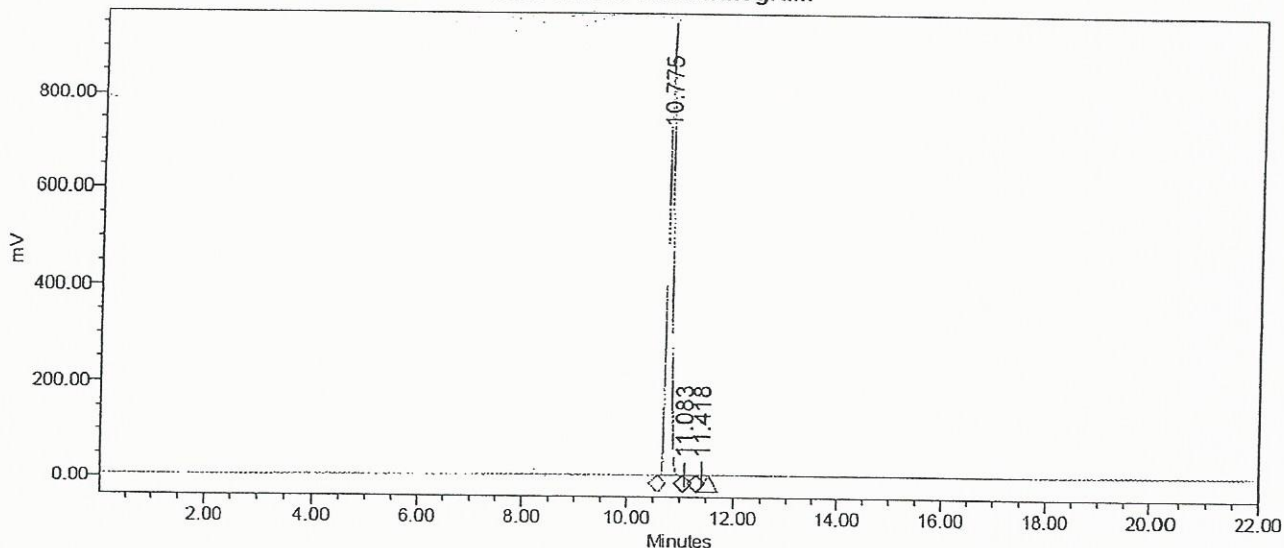
## HPLC ANALYSIS

Catalog No.: 020107S  
Product Name: Ginsenoside Rf  
Lot No.: 1509674

### SAMPLE INFORMATION

Sample Name:	Ginsenoside Rf	Acquired By:	System
Sample Type:	Unknown	Sample Set Name:	
Vial:	35	Acq. Method Set:	Ginsenoside Rf
Injection #:	1	Processing Method:	Samples
Injection Volume:	10.00 ul	Channel Name:	SATIN
Run Time:	22.0 Minutes	Proc. Chnl. Descr.:	

Auto-Scaled Chromatogram



#### Peak Results

	Name	RT	Area	% Area	USP Plate Count	USP Resolution
1		10.775	5466734	99.87	75442.38	
2		11.083	4106	0.08		1.95
3		11.418	2930	0.05	127154.04	2.08